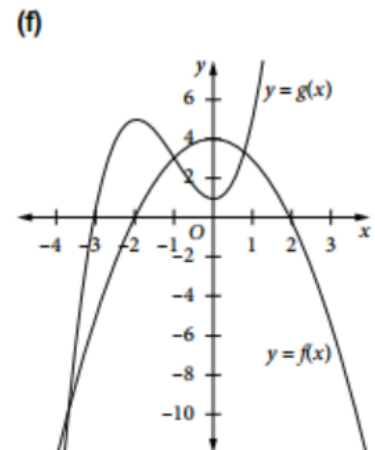
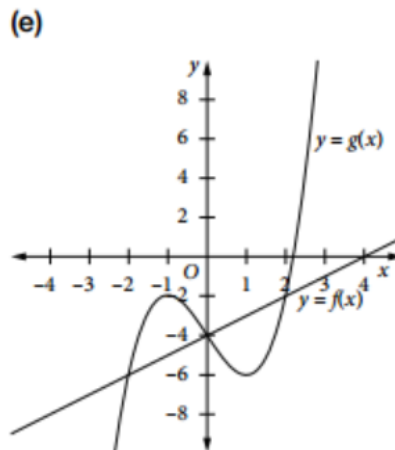
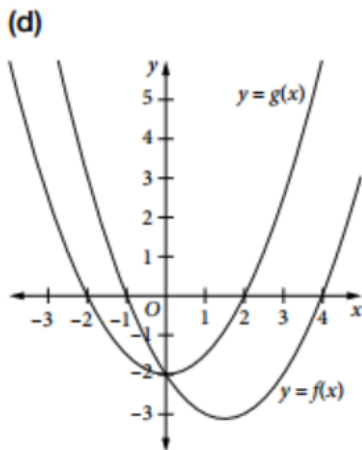
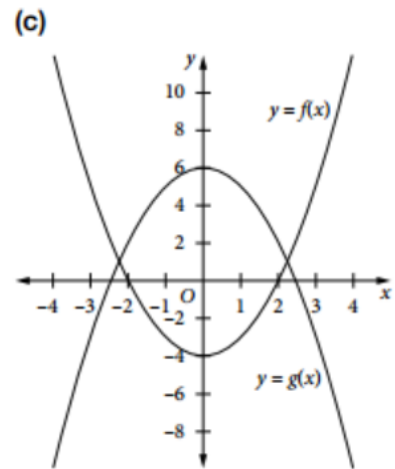
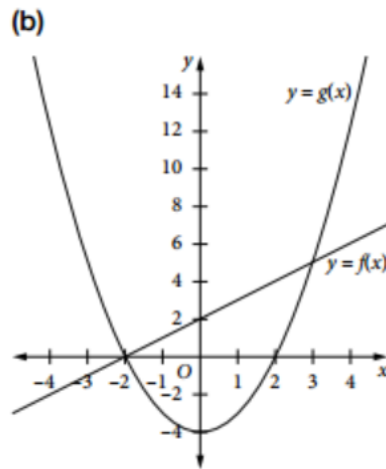
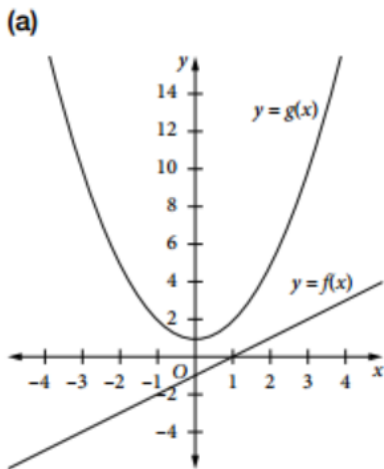


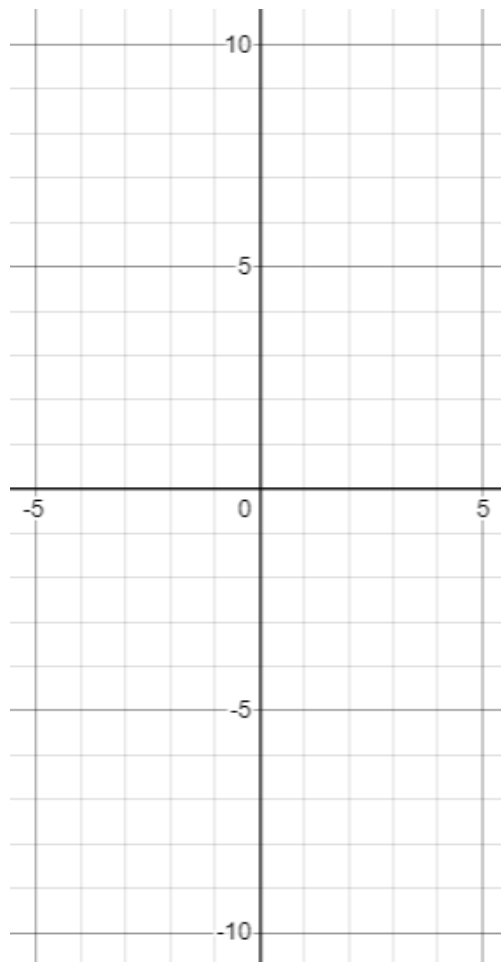
GRAPHING POLYNOMIALS BY ADDING ORDINATES

1 The graphs of $y = f(x)$ and $y = g(x)$ are shown. By drawing vertical lines and adding ordinates, draw the graph of $y = f(x) + g(x)$. Comment on the new curve.

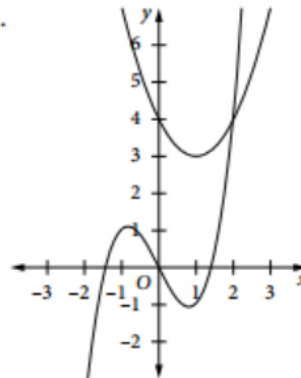


GRAPHING POLYNOMIALS BY ADDING ORDINATES

3 On the same diagram, sketch the graphs of $y = x^2 - 2x$ and $y = x^3$. Use these graphs to sketch $y = x^3 + x^2 - 2x$.



5 The graphs of $y = x^2 - 2x + 4$ and $y = x^3 - 2x$ are shown.



Which diagram represents the graph of $y = x^3 + x^2 - 4x + 4$?

