
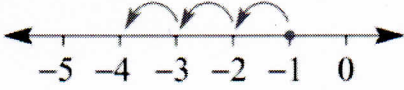
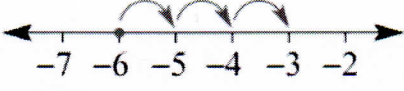
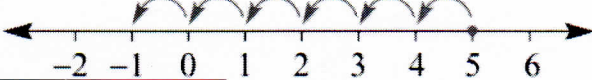


1 In which direction (i.e. right or left) on a number line do you move for the following calculations?

- a 2 is added to -5 *right* b 6 is added to -4 *right*
 c 4 is subtracted from 2 *left* d 3 is subtracted from -4 *left*

2 Match up the problems a to d with the number lines A to D.

a $5 - 6 = -1$ b $-2 + 4 = 2$
 c $-1 - 3 = -4$ d $-6 + 3 = -3$

A 
 B 
 C 
 D 

Handwritten red arrows connect problem a to number line D, b to A, c to B, and d to C.

3 Calculate the answer to these additions. Check your answers using a calculator.

- a $-1 + 2 = 1$ b $-1 + 4 = 3$ c $-3 + 5 = 2$ d $-10 + 11 = 1$
 e $-4 + 3 = -1$ f $-5 + 2 = -3$ g $-11 + 9 = -2$ h $-20 + 18 = -2$

4 Calculate the answer to these subtractions. Check your answers using a calculator.

- a $4 - 6 = -2$ b $7 - 8 = -1$ c $3 - 11 = -8$ d $1 - 20 = -19$
 e $-3 - 1 = -4$ f $-5 - 5 = -10$ g $-2 - 13 = -15$ h $-7 - 0 = -7$

5 Find the missing number.

- a $2 + \boxed{5} = 7$ b $-2 + \boxed{9} = 7$ c $-2 + \boxed{5} = 3$ d $-4 + \boxed{2} = -2$
 e $5 - \boxed{5} = 0$ f $3 - \boxed{7} = -4$ g $-9 - \boxed{3} = -12$ h $-20 - \boxed{10} = -30$

6 Evaluate the following. Remember to work from left to right.

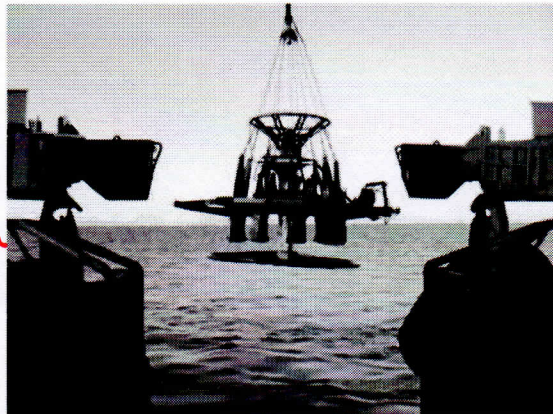
- a $3 - 4 + 6 = 5$ b $2 - 7 - 4 = -9$ c $-1 - 4 + 6 = 1$ d $-5 - 7 - 1 = -13$
 e $-3 + 2 - 7 + 9 = 1$ f $-6 + 1 - 20 + 3 = -22$ g $0 - 9 + 7 - 30 = -32$ h $-15 - 20 + 32 - 1 = -4$

7 Determine how much debt remains in these financial situations.

- a owes \$300 and pays back \$155 *\$145* b owes \$20 and borrows another \$35
 c owes \$21 500 and pays back \$16 250 *\$5,250* *\$55*

- 8 a The reading on a thermometer measuring temperature rises 18°C from -15°C . What is the final temperature? 3°C
- b The reading on a thermometer measuring temperature falls 7°C from 4°C . What is the final temperature? -3°C
- c The reading on a thermometer measuring temperature falls 32°C from -14°C . What is the final temperature? $-14 - 32 = -46^{\circ}\text{C}$

- 9 For an experiment, a chemical solution starts at a temperature of 25°C , falls to -3°C , rises to 15°C and then falls again to -8°C . What is the total change in temperature? Add all the changes together for each rise and fall. -33°C



- 10 An ocean sensor is raised and lowered to different depths in the sea. Note that -100 metres means 100 metres below sea level.
- a If the sensor is initially at -100 metres and then raised to -41 metres, how far does the sensor rise? 59m
- b If the sensor is initially at -37 metres and then lowered to -93 metres, how far is the sensor lowered? 56m

$$\begin{array}{r} 25 \\ -28 \\ +18 \\ -23 \\ \hline -33 \end{array}$$

- 11 Give an example that suits the description.

- a A positive number subtract a positive number equals a negative number. $3 - 4 = -1$
- b A negative number subtract a positive number equals a negative number. $-2 - 1 = -3$
- c A negative number add a positive number equals a positive number. $-2 + 3 = 1$
- d A negative number add a positive number equals a negative number. $-3 + 1 = -2$

- 12 a a is a positive integer, b is a positive integer and $a > b$. For each of the following, decide if the result will be positive, negative or zero.

i $a + b > 0$ ii $a - b > 0$ iii $b - a < 0$ iv $a - a = 0$

- b a is a negative integer and b is a positive integer. Decide if each of the following is *always* true.

i $a + b$ is positive *not always true* ii $a - b$ is negative *always true*

- 13 Insert + or - signs into these statements to make them true.

a $3 \boxed{-} 4 \boxed{+} 5 = 4$

b $1 \boxed{+} 7 \boxed{-} 9 \boxed{-} 4 = -5$

c $-4 \boxed{-} 2 \boxed{-} 1 \boxed{+} 3 \boxed{+} 4 = 0$

d $-20 \boxed{+} 10 \boxed{+} 7 \boxed{+} 36 \boxed{+} 1 \boxed{-} 18 = -4$

e $-a \boxed{-} b \boxed{+} a \boxed{+} b = 0$

f $-a \boxed{-} a \boxed{+} 3a \boxed{-} b \boxed{-} b = a - 2b$

1 Write down the missing numbers in these sentences. The first one has been done for you

- a $2 + 5$ means that 5 is added to 2.
- b $-3 + 6$ means that $\boxed{6}$ is added to $\boxed{-3}$.
- c $1 + (-3)$ means that $\boxed{-3}$ is added to $\boxed{1}$.
- d $-7 + (-11)$ means that $\boxed{-11}$ is added to $\boxed{-7}$.
- e $5 - 3$ means that $\boxed{3}$ is subtracted from $\boxed{5}$.
- f $-2 - 6$ means that $\boxed{+6}$ is subtracted from $\boxed{-2}$.
- g $7 - (-3)$ means that $\boxed{-3}$ is subtracted from $\boxed{7}$.
- h $-7 - (-11)$ means that $\boxed{-11}$ is subtracted from $\boxed{-7}$.

2 Complete these sentences.

- a Adding -4 is equivalent to subtracting $\boxed{4}$.
- b Adding -6 is equivalent to subtracting 6.
- c Adding 5 is equivalent to subtracting $\boxed{-5}$.
- d Adding -11 is equivalent to subtracting 11.
- e Subtracting -2 is equivalent to adding $\boxed{2}$.
- f Subtracting -7 is equivalent to adding 7.

3 State whether each of the following is true or false.

- a $2 + (-3) = 5$ **F**
- b $10 + (-1) = 9$ **T**
- c $-5 + (-3) = -8$ **T**
- d $-6 + (-2) = -4$ **F**
- e $5 - (-1) = 4$ **F**
- f $3 - (-9) = 12$ **T**
- g $2 - (-3) = 1$ **F**
- h $-11 - (-12) = -1$ **F**

4 Calculate the answer to each of these additions. Check your answer using a calculator.

- a $3 + (-2) = 1$
- b $8 + (-3) = 5$
- c $12 + (-6) = 6$
- d $9 + (-7) = 2$
- e $1 + (-4) = -3$
- f $6 + (-11) = -5$
- g $20 + (-22) = -2$
- h $0 + (-4) = -4$

5 Calculate the answer to each of these subtractions. Check your answer using a calculator.

- a $2 - (-3) = 5$
- b $5 - (-6) = 11$
- c $20 - (-30) = 50$
- d $29 - (-61) = 90$
- e $-5 - (-1) = -4$
- f $-7 - (-4) = -3$
- g $-11 - (-6) = -5$
- h $-41 - (-7) = -34$

6 Find the missing number.

- a $2 + \boxed{-3} = -1$
- b $3 + \boxed{-10} = -7$
- c $-2 + \boxed{-4} = -6$
- d $\boxed{4} + (-3) = 1$
- e $\boxed{-1} + (-10) = -11$
- f $\boxed{4} + (-4) = 0$
- g $5 - \boxed{-1} = 6$
- h $2 - \boxed{-5} = 7$

7 Calculate the answer, working from left to right.

a $3 + (-2) + (-1) = 0$ b $2 + (-1) + (-6) = -5$ c $3 - (-1) - (-4) = 8$
 d $10 - (-6) + (-4) = 12$ e $-7 - (-1) + (-3) = -9$ f $-20 - (-10) - (-15) = 5$
 g $-9 - (-19) + (-16) = -6$ h $-15 - (-20) + (-96) = -91$ i $-13 - (-19) + (-21) = -15$
 j $-2 - (-3) - (-5) = 6$ k $-18 - (-16) - (-19) = 17$ l $5 + (-20) - (-26) = 11$

8 A diver is at a height of -90 metres from the surface of the sea. During a diving exercise, the diver rises 50 metres, falls 138 metres and then rises once again by 35 metres. What is the diver's final height from sea level?

$$\begin{array}{r}
 -90 \\
 +50 \\
 -138 \\
 +35 \\
 \hline
 -143
 \end{array}$$

9 A small business has a bank balance of $-\$50\,000$. An amount of $\$20\,000$ of extra debt is added to the balance and, later, $\$35\,000$ is paid back. What is the final balance?

$$-50,000 - 20,000 + 35,000 = -35,000$$

10 $\$100$ of debt is added to an existing balance of $\$50$ of debt. Later, $\$120$ of debt is removed from the balance. What is the final balance?

$$50 + 100 - 120 = 30 \text{ of debt.}$$

11 Here is a profit graph showing the profit for each month of the first half of the year for a bakery shop.

a What is the profit for:

i February? $\$8,000$

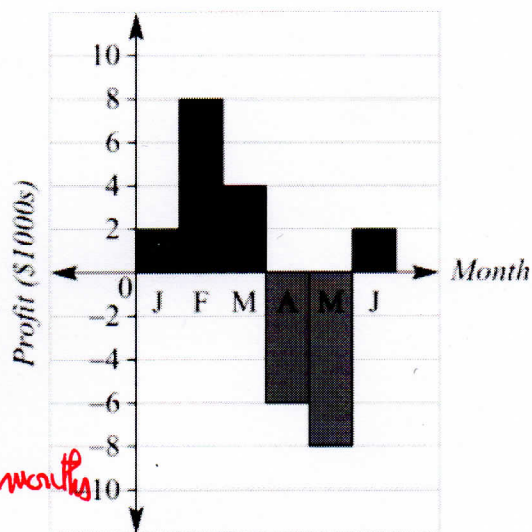
ii April? $-\$6,000$

b What is the overall profit for the 6 months?

$$2 + 8 + 4 - 6 - 8 + 2 = 2$$

which is in thousands of $\$$

so $\$2,000$ profit for 6 months



12 Complete these magic squares, using addition. The sum of each row, column and diagonal should be the same.

a

-2	0	5
8	1	-6
-3	2	4

= 3

b

-13	-11	-6
-3	-10	-17
-14	-9	-7

11
-30